

Wednesday 20th May

Spider

The aim of the game is to draw all of the part of a spider by rolling the numbers on the dice. The winner is the first person to draw a complete spider.

Players must take turns to roll the dice and draw the body parts of the spider, depending on what number is shown

You must have rolled a 1 to draw the body first and you cannot draw eyes or feelers before you roll a 3 for the head.



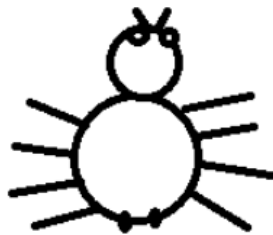
body



leg



head



eye



feeler



spinnerets

While playing, you can reinforce counting, addition and subtraction “How many legs have you drawn so far? 4? So you have drawn half the legs you need to” “ I have drawn 7 legs now so I only need 1 more”

You could create a similar game of your own with a different animal (e.g. elephant: face, trunk, eyes, ears, tusks, mouth)

I'd love to see some of your ideas.