

Imperial measures

1 Sort the measures into the table.

The first one has been done for you.

gram	pound	ounce	foot
kilogram	centimetre	inch	stone
gallon	millilitres	litres	kilometres

	Metric	Imperial
Mass	gram	
Capacity		
Length		

2 Fill in the missing numbers.

a) 1 foot is equal to inches.

1 inch is approximately centimetres.

b) 1 pound is equal to ounces.

1 stone is equal to pounds.

c) 1 gallon is equal to pints.

3 Complete the conversions.

a) 1 foot = inches

2 feet = inches

10 feet = inches

20 feet = inches

15 feet = inches

b) 1 gallon = pints

gallons = 40 pints

gallons = 48 pints

gallons = 960 pints

4 The world's tallest man was 8 feet and 11 inches tall.

a) What was his height in inches?

inches

b) Approximately how tall was he in centimetres?

 cm

5

1 pound = 16 ounces

1 stone = 14 pounds

Given these facts, how many ounces are in 1 stone?

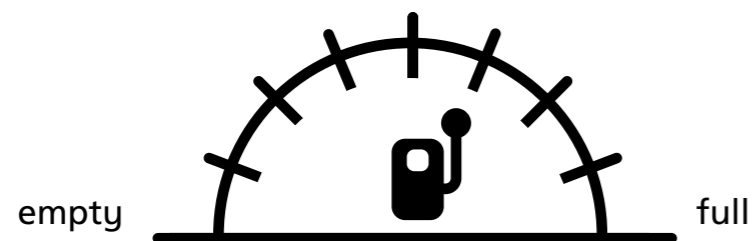


6

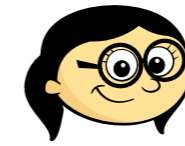
Mr White's car has a fuel tank that can hold 16 gallons of petrol.

a) His tank is a quarter full.

Draw an arrow to show how much petrol is in his tank.



b)



Mr White needs another 96 pints of petrol to fill his tank.

Is Annie correct? _____

Show your working out to support your answer.

7

Design a poster that could help someone remember the different imperial units and their conversions.

